

Milldam Cottage. Tankerness, Orkney. KW17 2QU

Tel: 07807 172 519 – Email: sales@peediemodels.com – Web: www.peediemodels.com

SAFETY FIRST!

Resin Parts.

When cleaning up resin parts a certain amount of dust will be created. Resin dust can be harmful so we recommend the use of a dust mask while performing this task. Think also of those around you by finding a suitable area for the job. Take similar precautions with any other substances such as adhesives and paints etc. Your kit may contain a number of small parts, which could be easily swallowed so keep these out of reach of small children and or animals.

Before assembly, gently wash all resin parts in warm (not hot) soapy water to remove any mould release agent, which may affect paints. Do not attempt to remove casting blocks from resin parts by snapping as this can often damage the part. For this task we recommend the use of a razor saw or similar tool. For best results use cyanoacrylate (super glue) for assembly. Two part epoxy glues may be of use for attaching larger parts.

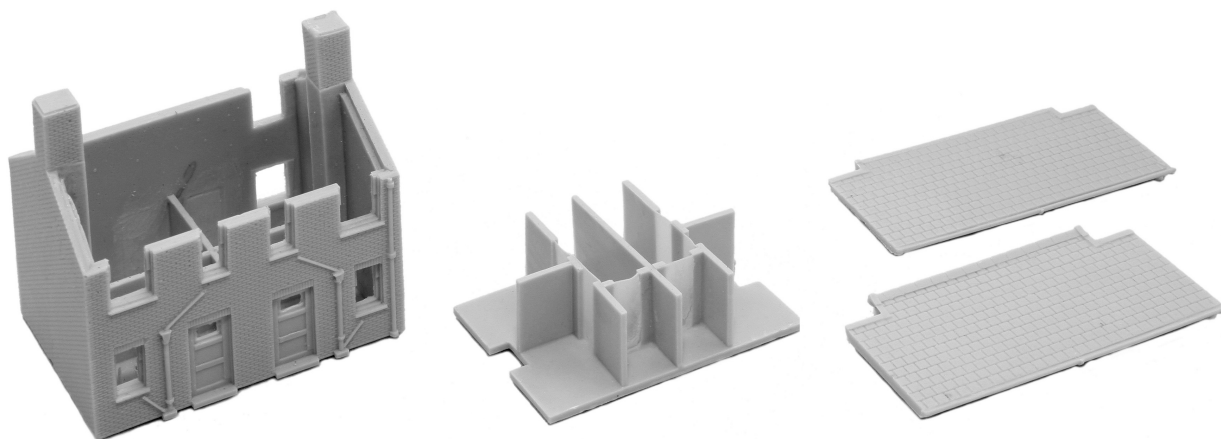
Photo Etch.

When working with photo etch we recommended that you cut the parts off using either small cutters or sharp scissors, or a chisel edge blade in a suitable craft knife (using downward pressure onto some form of firm cutting mat). There may be part of the tag still attached so the use of a small fine file will normally work. Remember that these parts will bend so it is advisable to hold the part in flat bladed pliers (using pliers with serrated areas will mark the brass), and file along the part rather than across it.

When fitting photo etch to any resin model part it's always advisable to dry fit the parts together to ensure a good clean fit. Once this has been achieved fixing the parts together is best done by using a two part epoxy glue for larger areas, or for fine detail / small parts the use of a thin super glue is recommended using the natural capillary action of the glue to flow between the parts. This will reduce the parts becoming stuck to you and possible damage to the fine detail of the photo etch.

Enjoy your modelling
Paul

PMM85004 - Pre war design house
(Muswell Models Master HS201)



Main Parts - House shell with ground floor walls, first floor wall insert and roof sections.

Construction Guide.

The first job is to clean all the fillets from the window and door openings, taking care not to remove too much of the flange around the window openings as the printed plastic window sections will be glued onto these.

If you plan to light the building then painting the inner parts is advisable at this stage, and take the appropriate steps for installing the lighting.

When fitting the first floor make sure the two small rooms face the middle windows, as you can see from the parts image. This has been laid out to show the direction of the part being inserted.

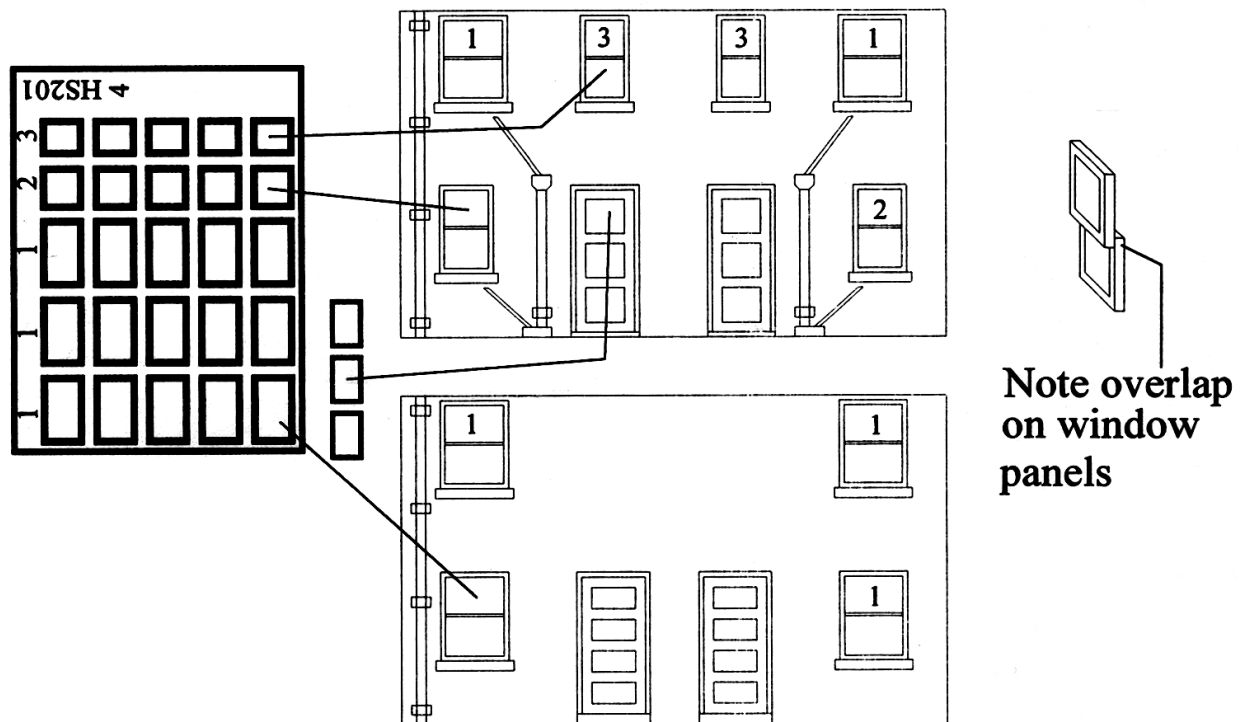
There will be a small amount of sanding and dry fitting of the roof sections to ensure they fit flush to the walls, taking time at this stage reduces the need to fill gaps which could lead to possible loss of detail.

Glue the first roof section in place using small amounts of super glue dotted around the walls, and then additional spots on the edge of the roof apex and slot in the final piece.

Before fitting windows I would recommend that the model is painted and weathered as required, and given a coat of varnish to seal in your hard work.

Fitting the windows.

Cut out each section of window and install as per the illustration below. We recommend that you use PVA glue to stick the clear parts in as super glue can cause the plastic to become fogged and it will show up finger prints too.



Please note that you will need glues and paints to complete your model. Whilst care is taken during the casting process sometime small bubbles appear, and the use of filler or thick super glue may be required to hide these small flaws.